



Procurement Department
675 West Main Street
Rochester, NY 14611
585-697-6182
procurementRHA@rochesterhousing.org

IFB120543 Bartlett Reynolds Site Improvements

ADDENDUM NO. 1

August 3, 2016

This Addendum consists of 4 pages: this acknowledgement, two pages of specifications and one drawing.

Acknowledgement:

I have received this Addendum # 1 and have used it in the calculation/preparation of this bid.

_____ Contractor

**This acknowledgement must be submitted with your
bid submission or your bid may be rendered invalid.**



Amendment #1

BARTLETT / REYNOLDS SITE IMPROVEMENTS 113-261 BARTLETT ST ROCHESTER, N.Y. RHA Work Order #120543

Contracts Affected (WO #120543)

August 2, 2016

Rochester Housing Authority
Capital Projects Department
675 West Main Street, Suite 120
Rochester, NY 14611
(585) 855-7580

This amendment shall become a part of the contract documents for the above noted contracts. All items indicated in this amendment shall be subject to all requirements and conditions noted in the original contract documents. All items indicated herein shall take precedence over and supersede any and all affected items in the original contract documents. Only plan holders who signed out a set of plans from the Capital Improvements Department of the Rochester Housing Authority and are on the list of plan holders for the project(s) shall receive this amendment. It is the responsibility of all plan holders to ensure their sub-contractors, suppliers, and/ or their other agents receive a copy of the same.

Clarifications:

1. On drawing CG-1, the existing catch basin is to be replaced with a new catch basin. Refer to detail A3/CG-3, similar. See attached revised drawing CG-1.
2. On drawing CG-1, the ADA sign is to be moved to space #9. The ADA symbol is to be painted on this space. See attached revised drawing CG-1.
3. On drawing CG-1, the sidewalk by the northwest corner of unit #259-261 is to be moved south to avoid the existing maple tree. See attached revised drawing CG-1.
4. On drawing CG-1 the numbers on the parking spaces are for reference only. Do not paint the numbers on the spaces.
5. The Geotextile Stabilization Fabric noted on detail A4 on drawing CG-1 shall be one of the following acceptable Manufacturers:
 - a. Phillips Fibers Corp., SUPAC 4NP.
 - b. WEBTEC, Inc. Terra Tex SD.
 - c. DuPont, Typar 3401.
 - d. Mirafi, 140N.
 - e. Exxon Chemical Co., GTF-130D.
 - f. Or approved equal

6. The header for page 3 for specification section 32 12 16 – Asphalt Paving shall read:

32 12 16 – Asphalt Paving Pg. 3 of 3:

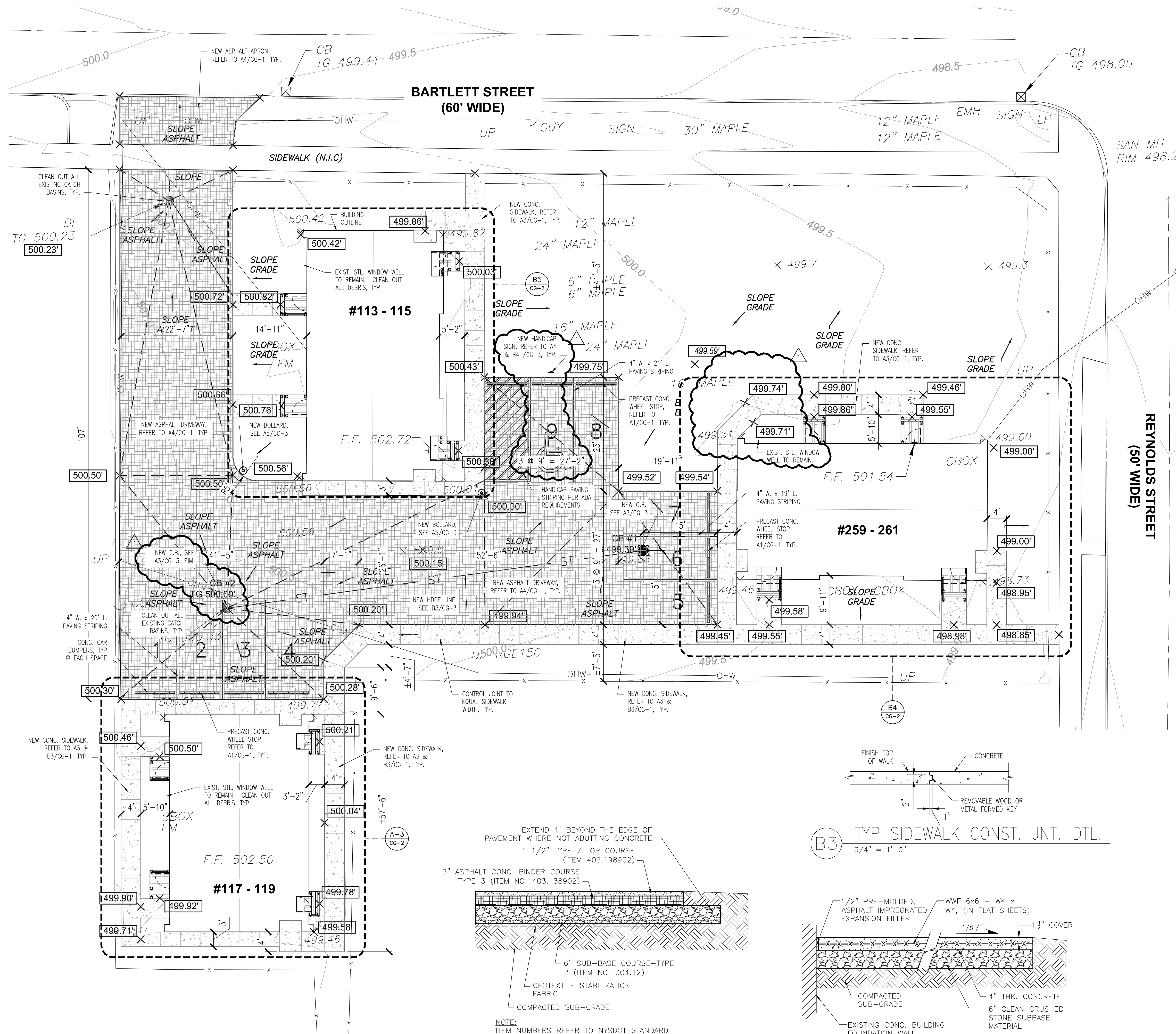
7. Add the following to specification section 32 12 16 – Asphalt Paving:

H. TESTING

1. ***The Contractor shall employ and pay for the services of an approved Independent Testing Laboratory to perform the services specified herein.***
2. ***Bituminous Paving:***
 - a. ***Laboratory Tests – subject specimen, taken from truckload of asphalt concrete, to 50 blows of standard marshall hammer on each side of specimen.***
 - b. ***Field Tests:***
 - i. ***Test in-place asphalt concrete courses for compliance with requirement for density.***
 - ii. ***Density:***
 - a) ***Compare density of in-place material against laboratory test of truckload specimen, using same testing procedures.***
 - b) ***In-place test specimens shall be taken at the location where the material was placed from the same truckload from which the laboratory specimen was taken.***
 - c) ***Minimum acceptable density of in-place surface course materials is 92% of the laboratory specimen density.***

END OF ADDENDUM #1

ARCH D 24" x 36"
Approved:
Checked:
Designer:
Project Management Initials:



NOTES:

- GENERAL NOTES:**
1. FIELD VERIFY ALL DIMENSIONS.
- CONSTRUCTION NOTES:**
1. RECONFIGURE/REWORK ALL EXIST. SIDING AS REQUIRED AROUND NEW STAIRS & LANDINGS, INCLUDING BUT NOT LIMITED TO: SIDING, J-CHANNELS, OUTSIDE CORNER POSTS, INSIDE CORNER POSTS, STARTER STRIPS, ETC.
 2. REMOVE EXISTING ALUMINUM CLAD WOOD TRIM UNDER ALL EXTERIOR DOORS. INSTALL NEW WHITE PVC BOARDS OF SAME THICKNESS. FILL ALL GAPS COMPLETE WITH PVC BOARDS.
 3. CLEAN ALL EXISTING ON SITE CATCH BASINS COMPLETE, TYP.
 4. ALL EXTERIOR WOOD IS TO BE PRESSURE-TREATED (P.T.) WOOD. SEE DETAILS AND DRAWINGS FOR SPECIFIC DIMENSIONS AND LOCATIONS.
 5. CONSTRUCT EACH STAIR WITH THE NUMBER OF RISERS INDICATED ON DWGS. FIELD VERIFY HEIGHTS BEFORE CONSTRUCTION, PROVIDE ANY ADDITIONAL RISERS & TREADS AS REQUIRED SO THAT NO RISER EXCEED IN 8 1/4" IN HEIGHT.
 6. METAL WINDOW WELLS TO REMAIN. CLEAN OUT ALL DEBRIS FROM WINDOW WELLS.
 7. ADD TOPSOIL AND RESTORE OR ADD LAWNS TO PROVIDE A COMPLETE FINISHED LAWN MINIMUM OF 4' BEYOND WALKS AND DRIVES.
 8. NUMBERS ON PARKING SPACES ARE FOR DRAWING IDENTIFICATION ONLY. DO NOT PAINT NUMBERS ON LOT.

LEGEND:

- BUILDING LINE
- FENCE LINE
- CONTOUR ELEVATION
- PROPERTY LINE
- SANITARY SEWER LINE W/MANHOLE & C.O.
- STORM SEWER LINE W/MH & CATCH BASIN
- ELECTRIC LINE W/PULLBOX, METER & MANHOLE
- UTILITY POLE, GUY, LIGHT POLE & TOP MOUNT LIGHT
- TREE
- EXIST POINT ELEVATION
- PROPOSED POINT ELEVATION

PROJECT
113-261 Bartlett Street
Site Improvements
113-261 Bartlett Street, Rochester, N.Y. 14608

CLIENT
ROCHESTER HOUSING AUTHORITY
675 W. MAIN STREET
ROCHESTER, NY 14611-2388

CONSULTANT
AECOM
257 West Genesee St., Suite 400
Buffalo, New York 14202
(716) 856-5636 tel (716) 856-2545 fax
www.aecom.com

REGISTRATION

ISSUE/REVISION

NO.	DATE	DESCRIPTION
3	2016-8-2	Addendum #1
2	2016-6-28	BID SUBMISSION
1	2016-6-17	SD / CD Review
UR		

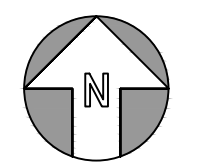
KEY PLAN

PROJECT NUMBER
WO #120543 / AECOM #60503803
SHEET TITLE
CIVIL GRADING PLAN, SITE DETAILS & NOTES

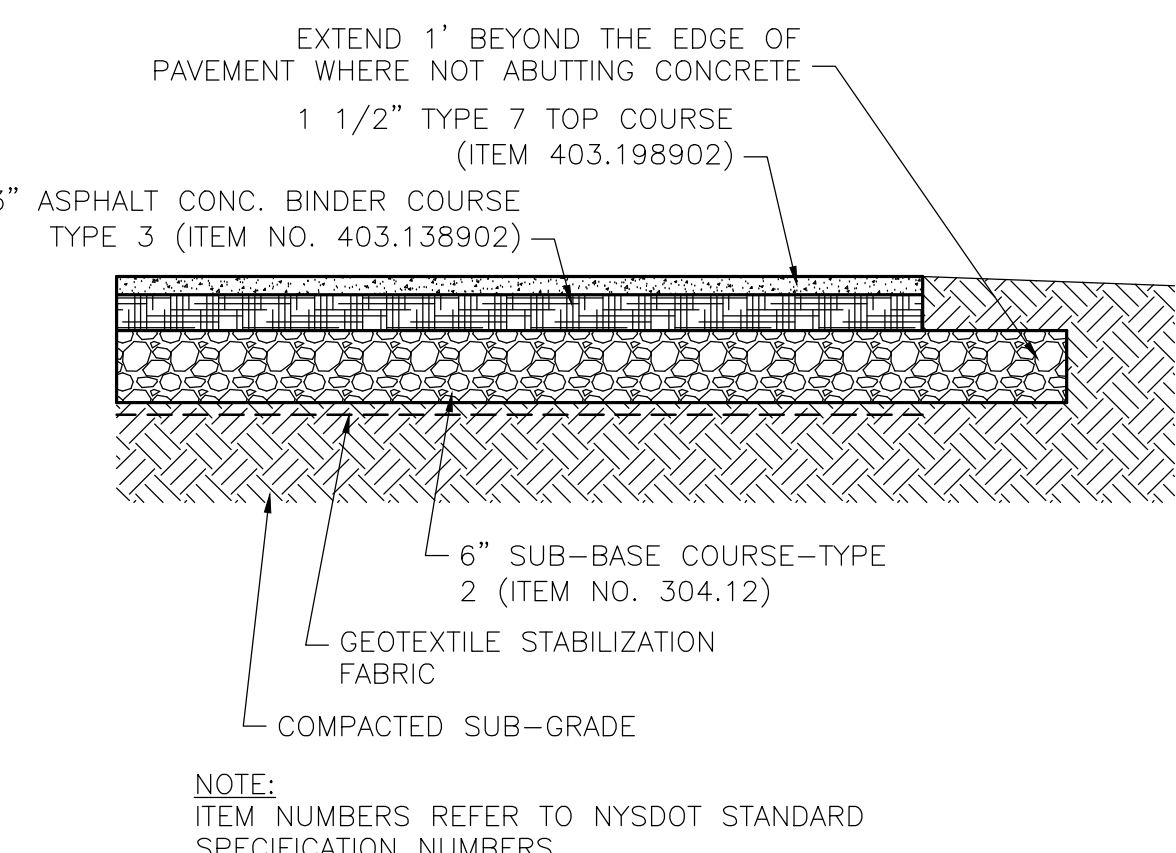
SHEET NUMBER

CG-1

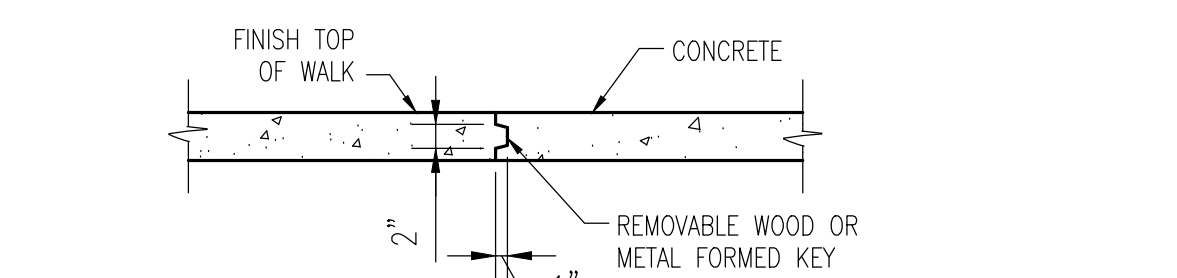
A5 CIVIL GRADING SITE PLAN
1' = 10'-0"



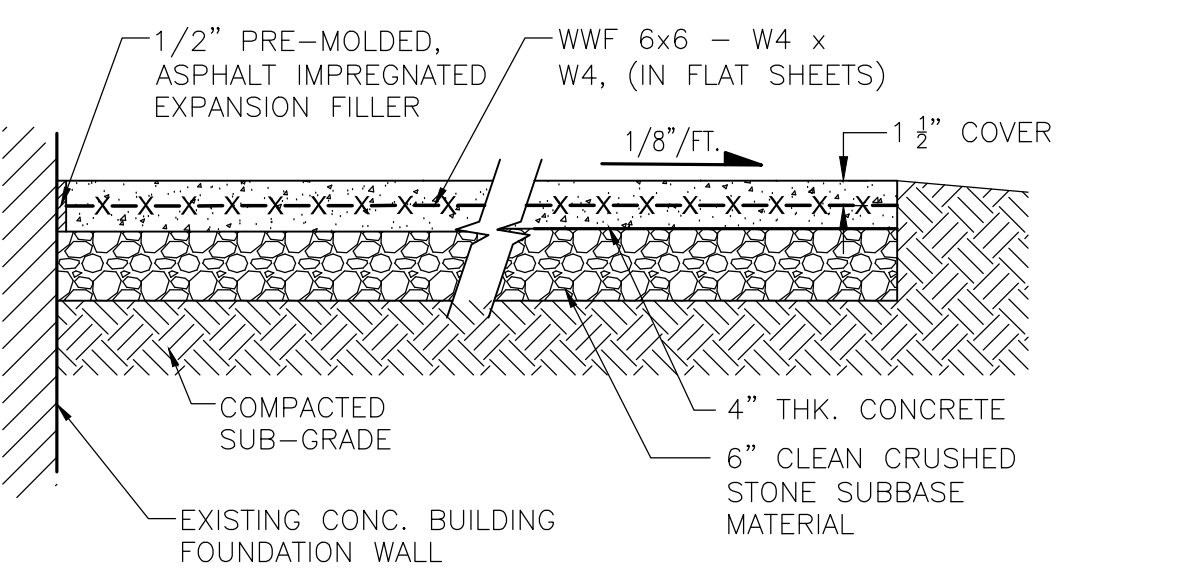
A4 TYP. ASPHALT PAVING SECTION
3/4" = 1'-0"



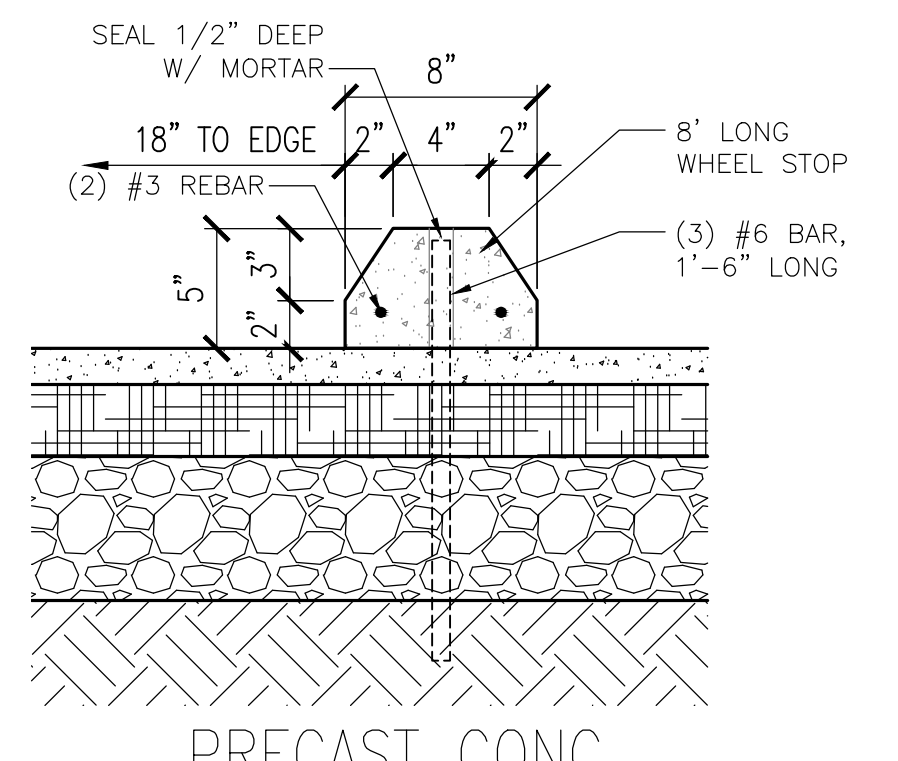
B3 TYP SIDEWALK CONST. JNT. DTL.
3/4" = 1'-0"



A3 TYPICAL SIDEWALK DETAIL
3/4" = 1'-0"



A1 PRECAST CONC. WHEEL STOP DTL.
1 1/2" = 1'-0"



Last saved by: HERB/016/08/03, Last Printed: 2016-08-02
Filename: Z:\JOBS\AECOM\RH\A60503803_BARTLETT\DELIVERABLES\BID\ADDENDUM 1\A-1_CG-1.DWG
Printed on Post-Consumer Recycled Content Paper

PRODUCED BY AN AUTODESK EDUCATIONAL PRODUCT